

TECH NOTE 006

ISSUE DATE: 23 - Dec - 2004

EXEDY REF: 006

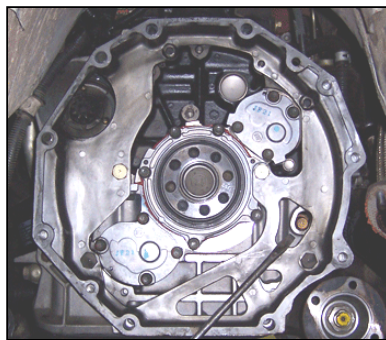
JACKAROO 4JX1 FLYWHEEL SETUP PROCEDURE

CAUTION

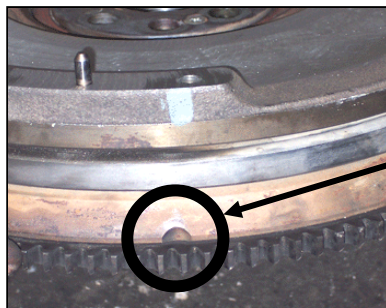
The position of the flywheel should be noted prior to removal from the 4JX1 engine to ensure that new solid steel replacement flywheel and crankshaft in the identical position. Reinstalling the solid flywheel in the correct position in relation to the crankshaft position sensor allows the sensor to read off the toothed wheel. It is critical to reinstall the flywheel and toothed wheel in the correct position; otherwise the engine will not start.

If the installer has failed to take note of the flywheel positions, the following procedures can be used where assembly is required without appropriate reference marks.

1. To obtain T.D.C, align crankshaft pulley notch with mark on timing case. Refer to Fig 1



2. a. Timing mark is pointing towards 6 o'clock. Refer to fig 2.



Timing mark on
flywheel at 6 o'clock

- b. Ensure crankshaft sensor toothed wheel is located in correct position, gap in teeth positioned approx. 5 degrees pas the axle. Refer to fig 3.

