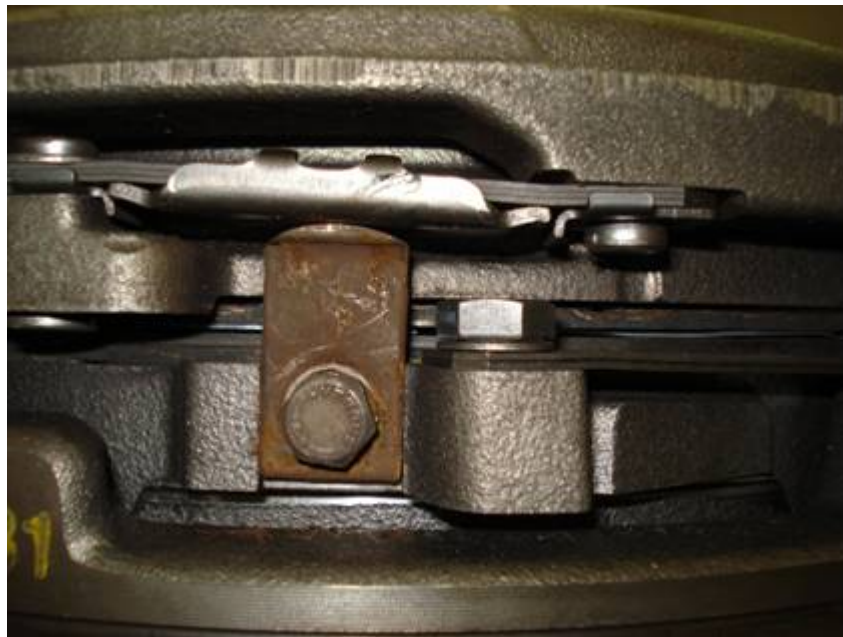


# TECH NOTE 030

**ISSUE DATE:** 29-July-08  
**EXEDY REF:** 030

## Intermediate Plate Centralizer Re-Use VLK-7264

PLEASE NOTE: the intermediate plate centralizers used in the assembly pictured are no longer available. Therefore it is necessary to re-use the centralizers from the assembly being replaced.



The centralizer is slotted and correct adjustment is achieved when the domed upper surface of the centralizer just comes into contact with the pressure plate drive strap. This adjustment is imperative and must be performed with the clutch assembly bolted to the flywheel.