

**TECH NOTE 042**

**ISSUE DATE : - 13/07/10**

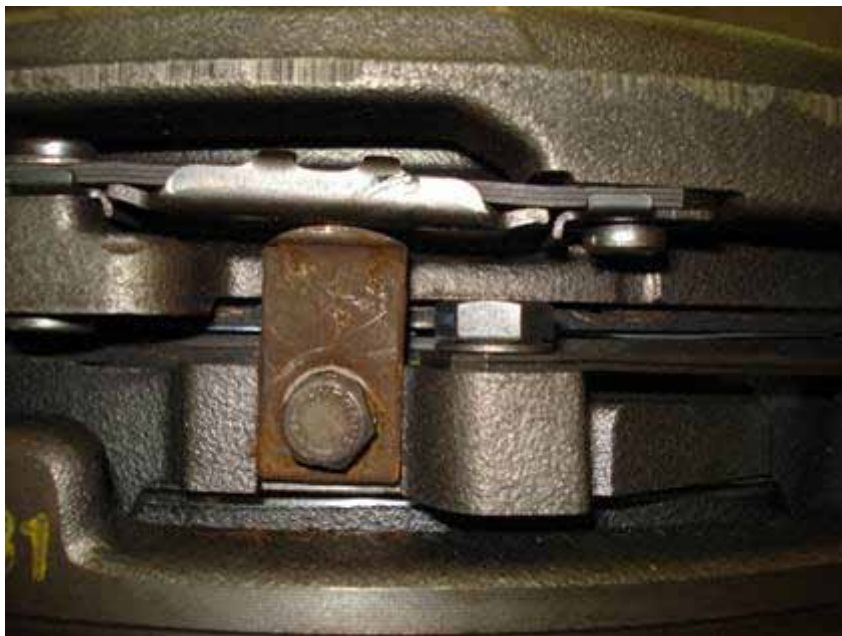
**EXEDY REF : - 042**

**Intermediate Plate  
Centralizer  
BZK-7460/VLK-7851**

## **BZK-7460 / VLK-7851**

*Please note: -*

The centralizer is slotted and correct adjustment is achieved when the domed upper surface of the centralizer contacts the pressure plate drive strap. This adjustment is imperative and must be performed with the clutch assembly bolted to the flywheel.



**EXEDY**  
**No.1 for Clutch**