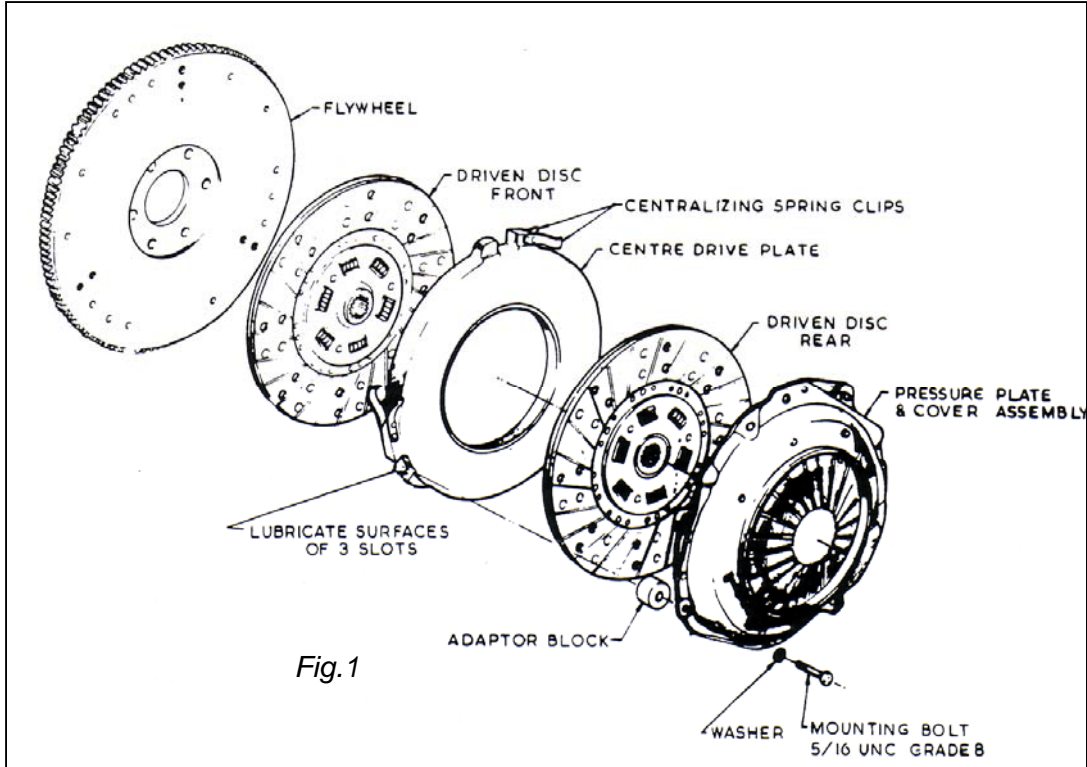


TECH NOTE J

ISSUE DATE: 13-Dec-04
EXEDY REF: J
REVISED: 15-Aug-05

FORD TWIN PLATE CLUTCH ASSEMBLY & INSTALLATION PROCEDURE



WARNING:

The Centre Drive Plate Centralising Spring Clips are a critical part of the Twin Plate Clutch System. Each clip is precision set. If the Clips are damaged, the Centre Drive Plate and the Pressure Plate and Cover Assembly must be replaced as a unit.

FLYWHEEL MUST BE MACHINED

1. Position the Driven Disc – FMD 8270 with “Flywheel Side” stamp facing flywheel. (Fig 1)
2. Before installation of the Centre Drive Plate, ensure that a light film of high temperature lubricant is present on the inside surfaces of the Drive slots. (See fig.2). Locate the Centre Drive Plate over the adaptors with the Centralising Spring Clips to the right or clockwise to the adaptors (fig. 3).

TECH NOTE J

ISSUE DATE: 13-Dec-04
EXEDY REF: J
REVISED: 15-Aug-05

FORD TWIN PLATE CLUTCH ASSEMBLY & INSTALLATION PROCEDURE

WARNING:

Centralising Spring Clips must not be damaged in any way or malfunction of the clutch will result.

3. Position the Driven Disc FMD 8271 with the "Pressure Plate Side" stamp facing rear of the vehicle. (Fig. 3).
4. Insert Clutch Aligning Tool into Driven Discs and the Pilot Bearing. (Fig 6)
5. Line up the Balance Mark and position the Pressure Plates and Cover Assembly over the Adaptors (fig 5).
6. Tighten the Mounting Bolts (fig 7) evenly to 26 – 28 Nm (19 to 21 lbs/ft) torque.

Flywheel side disc
NOTE



Gearbox side disc
NOTE



TECH NOTE J

ISSUE DATE: 13-Dec-04
EXEDY REF: J
REVISED: 15-Aug-05

FORD TWIN PLATE CLUTCH ASSEMBLY & INSTALLATION PROCEDURE



Fig. 1

Drive slots

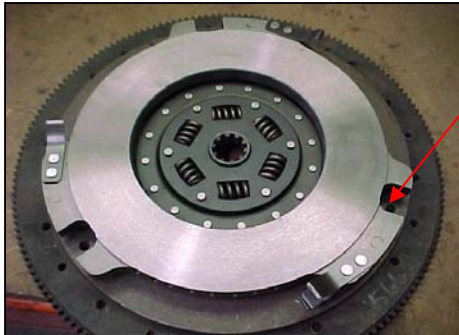


Fig. 2

Centralising
spring clips to
face clockwise

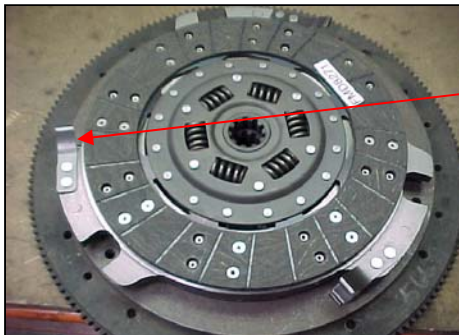


Fig. 3

Centre drive
plate adaptors

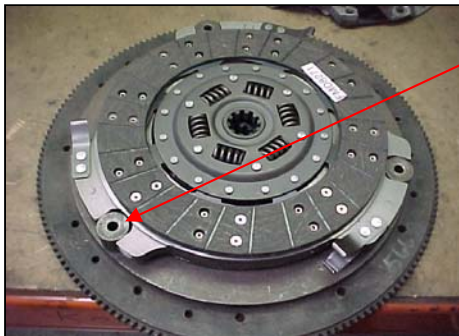


Fig. 4

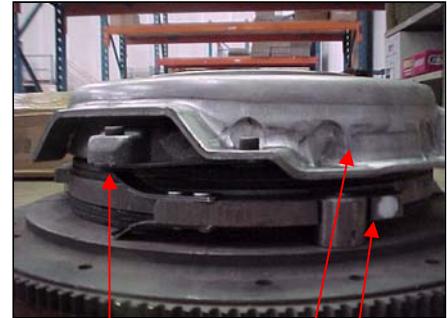


Fig. 5

Note: cover
assembly rivet sits
on centralising
spring clips

White marks
aligned

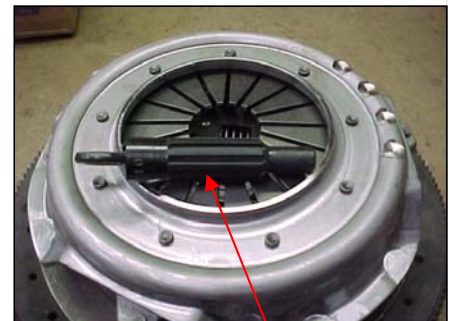


Fig. 6

Old input shaft or a
splined aligning tool
to be used.

EAP part number **DCT-FC10**